



CATCH THE NEXT

From Co-Requisites to Pathways: Best Practices in Advising from Texas Community Colleges



@catchthenext



@catchcollege



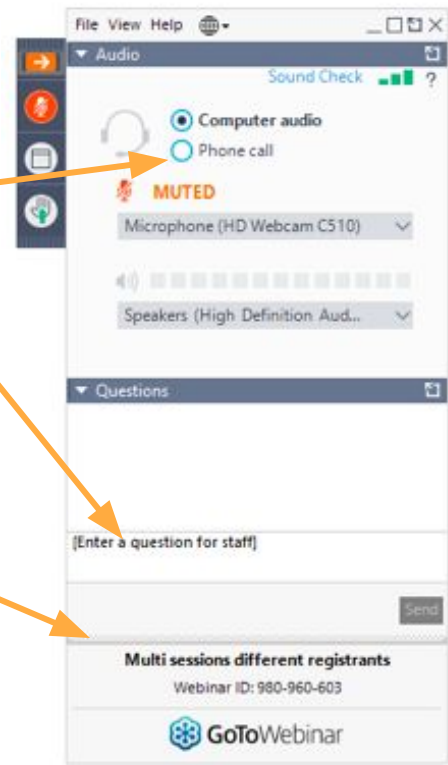
Search "Catch the Next"

#TLFSSchat



How to Participate in Today's Webinar

1. All attendees come to the webinar muted. If your computer audio is not working, you may switch to phone call.
2. Throughout the presentations today, you may type a question into the questions pane, and I will read it for you during Q&A.
3. If you have any technical difficulties you can also submit a question to me or you can email me at lydia.cdebaca@catchthenext.org
4. There are handouts for you to download that each presenter may reference during her talk. Click on the handouts section and then click each PDF link to download the handouts.



 @catchthenext

 @catchcollege

 Search "Catch the Next"

#TLFSSchat



Catch the Next Announcements

- Transformative Teaching Track, Oct. 24-25 at Hotel Indigo, San Antonio Riverwalk -- Register a Faculty Pairing from Your College Today at www.catchthenext.org > Events > Transformative Teaching Track
- Ascender Fall Seminar, Oct. 25-26 at Hotel Indigo, San Antonio
- Fall Reception and Fundraiser, Oct. 25th at 6:00pm at Hotel Indigo, San Antonio Riverwalk, Seats are \$120 and tables are \$1200, member college seats are \$50 -- Contact Maria Martha Chavez or Debra McBeath for More Information
- Currently recruiting students for the John Sicheloff Journalism Internship -- Contact Debra McBeath

 @catchthenext

 @catchcollege

 Search "Catch the Next"

#TLFSSchat



From Co-requisites to Pathways: Best Practices in Advising from Texas Community Colleges



Why Guided Pathways?

- ❖ Streamline navigation to and through our system and beyond to transform the student experience to increase
 - Persistence/Retention
 - Completion
 - Transfer
 - Employment



How has DCCCD Approached Guided Pathways?

- ❖ Taken an integrated, institution-wide approach to student success, driven by evidence...
 1. Clarify paths to student end goals, providing fewer choices and clearer program maps that lead to transfer or the workforce.
 2. Help students choose and enter a pathway, including bridges from high school to college, on-ramps to programs of study, and accelerated remediation.
 3. Help students stay on a path with intrusive, ongoing advising and integrated educational and non academic supports.
 4. Ensure that students are learning with clear program outcomes aligned to employer and/or transfer institution expectations, engaging and applied learning experiences, and effective instructional practices.



The Importance of Guided Pathways

- ❖ Start with the end in mind
 - Student may start at a community college, but what is the goal?
- ❖ Engage faculty and staff
 - Thinking critically about student success, not just student enrollment.
- ❖ More than just a map of courses
 - What other support is in place to smooth student navigation in and through one of our colleges?



Career Paths

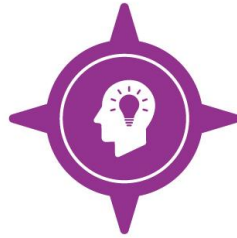
(Meta-Majors)



**ARTS,
HUMANITIES,
COMMUNICATION
& DESIGN**



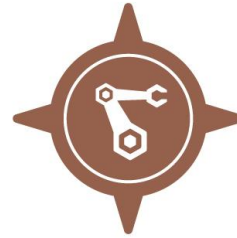
BUSINESS



EDUCATION



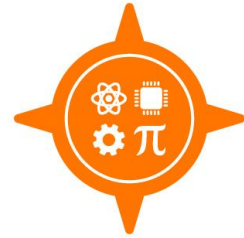
HEALTH SCIENCES



**INDUSTRY,
MANUFACTURING
& CONSTRUCTION**



**SOCIAL SCIENCES
& PUBLIC
SERVICE**



STEM

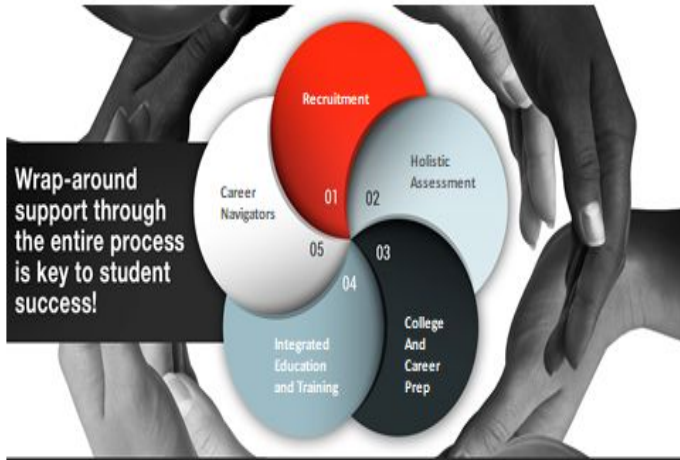


**Dallas County
Community College District**

Education That Works.

Promising Mathematics & Advising Pathways

Fully Integrated Model



QUALITY ENHANCEMENT
COLLIN COLLEGE PLAN

ACADEMIC PLANNING COACH PROGRAM

Personalized Academic Planning for Completing Your Degree, Program, and/or Certificate!
Enrollment Now Open for Fall 2018

Explore Degrees, Programs, and Certificates

EARN ELIGIBILITY TO REGISTER EARLY!

Track Progress, Plan Courses, and Complete on Time

EMAIL QEP@COLLIN.EDU TO SIGN UP

Mandatory for all DE Students placing in Reading, Writing & Math

Three Required group advising sessions with faculty coach:

1. January 2019 Goal Setting focusing on your program of study
2. February 2019 Transfer, Workforce Expo, Running Audits
3. April 2019 Seeking Internships and visiting the career center

Fast Tracking Developmental Education Students to Mathematic Pathways



Promising Mathematics & Advising Pathways



FAST TRACK *Your College Career*
Take new corequisite classes

- 1** > Meet with an advisor
- 2** > Register for Developmental Education corequisite courses
- 3** > Register for EDUC/PYSC 1300 Learning Frameworks Course
- 4** > Attend mandatory orientation for Academic Planning Coach Program
- 5** > Participate in First Year Experience Program



Student Advising Tips for Corequisite Courses

- Please advise all Developmental Education Students who have tested into at least one area of DE to enroll in Corequisite Courses.
- Do not advise college ready students to take Corequisite Courses.
- Encourage those students to participate in Supplemental Instruction.
- Veteran students must take the TSI assessment in place into DE levels for the corequisite course to be covered by financial aid and also for our institution to count them as part of our DE population.



Advising for Writing Course Corequisites with INRW

- **English Composition**

Audience = Peers, Policy Makers

Skills = Literature Analysis; Persuasive Essays; Using and Citing Sources

Compatible Majors = Academic

- **Business, Government and Technical Communication***

Audience = Customers, Employees, Practitioners

Skills = Simplification of Complex Ideas; Instructions, Processes, and Guidelines

Compatible Majors = Workforce

*Check students' major plan to make sure Tech Comm is an alternative to Eng Comp!

Advising for Elective Course Corequisites with INRW

- Corequisites with Liberal Arts and Humanities Courses -
History, Philosophy, Humanities, Speech

Emphasis: Discovery and Innovation, Specific Observations to Generalization

Skills: Interpret Original Sources; Compare Perspectives; Identify Connections

Compatible Majors: Arts, History, Marketing, Academia

- Corequisites with Social and Behavioral Sciences Courses-
Psychology, Sociology, Government

Emphasis: Method and Process, General Hypothesis to Specific Conclusion

Skills: Research and Statistics; Logical Conclusions; Application of Theories

Compatible Majors: STEM, SBS, Management, Workforce

Questions?

Contact Info:

- Catherine Olivarez, colivarez@dcccd.edu
- Tina Jackson, tmjackson@collin.edu
- Julie Wauchope, julie@austincc.edu

Interested in More Info About Catch the Next and its Programs?

Contact:

- Maria Martha Chavez, maria.chavez@catchthenext.org